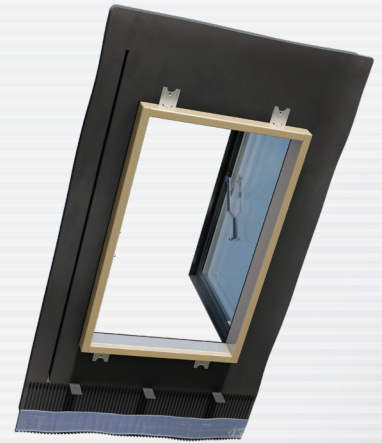
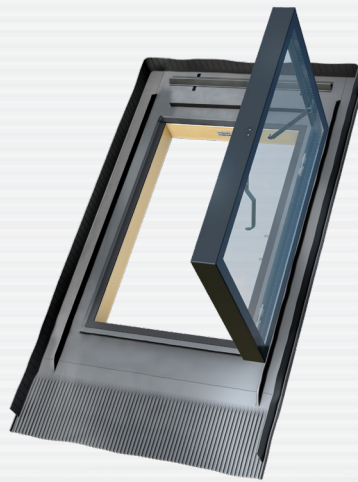




# WVR V6 47 x 73

FOR NON HABITABLE AREAS



**TILE SUPPORT WEDGE**

correct and aesthetic assembly of the roof



**BUTYL ON THE APRON'S INNER SURFACE**

ensures exact fit of the apron



**SASH CLOSING LIMITER**

at the full opening 90°



**THE HANDLE FOR OPENING SASH**

3-stepped air access adjustment



**THE CHIMNEY-SWEEP RAIL**

metal shield protects bottom part of the frame



**THE DRAINAGE GUTTER**

drainage of condensate from the vapor barrier membrane



**ALUMINUM MESH IN THE LOWER PART OF THE FLASHING**

perfectly fits to the roofing material



**TRIPLE GLAZING PACKET V6 WITH EXTERNAL TOUGHENED PANE**

toughened glass is a hail resistant



**FOR INSTALLATION IN THE ROOF PITCH 15° - 75°**



**THE INTEGRATED FLASHING**

made with EPDM



**JOINERY IS MADE FROM IMPREGNATED AND GLUED PINE WOOD**

that extends of product lifetime



**COLOUR RAL 7016**



**INTERCHANGEABLE SASH OPENING DIRECTION**

from right to left side



**POSSIBILITY OF COMBINED HORIZONTAL INSTALLATION**

joining any number of skylight(at a distance of 12cm)can be horizontally combined fit to the roof materials



**Sizes of skylight**

external size window: width × height [cm]	47 x 73
WVR V6 47×73 - with external toughened pane and inner laminated pane class P2A - roof pitch 5°-75°	-
delivery time: 3 - 5 [working days]	netto price